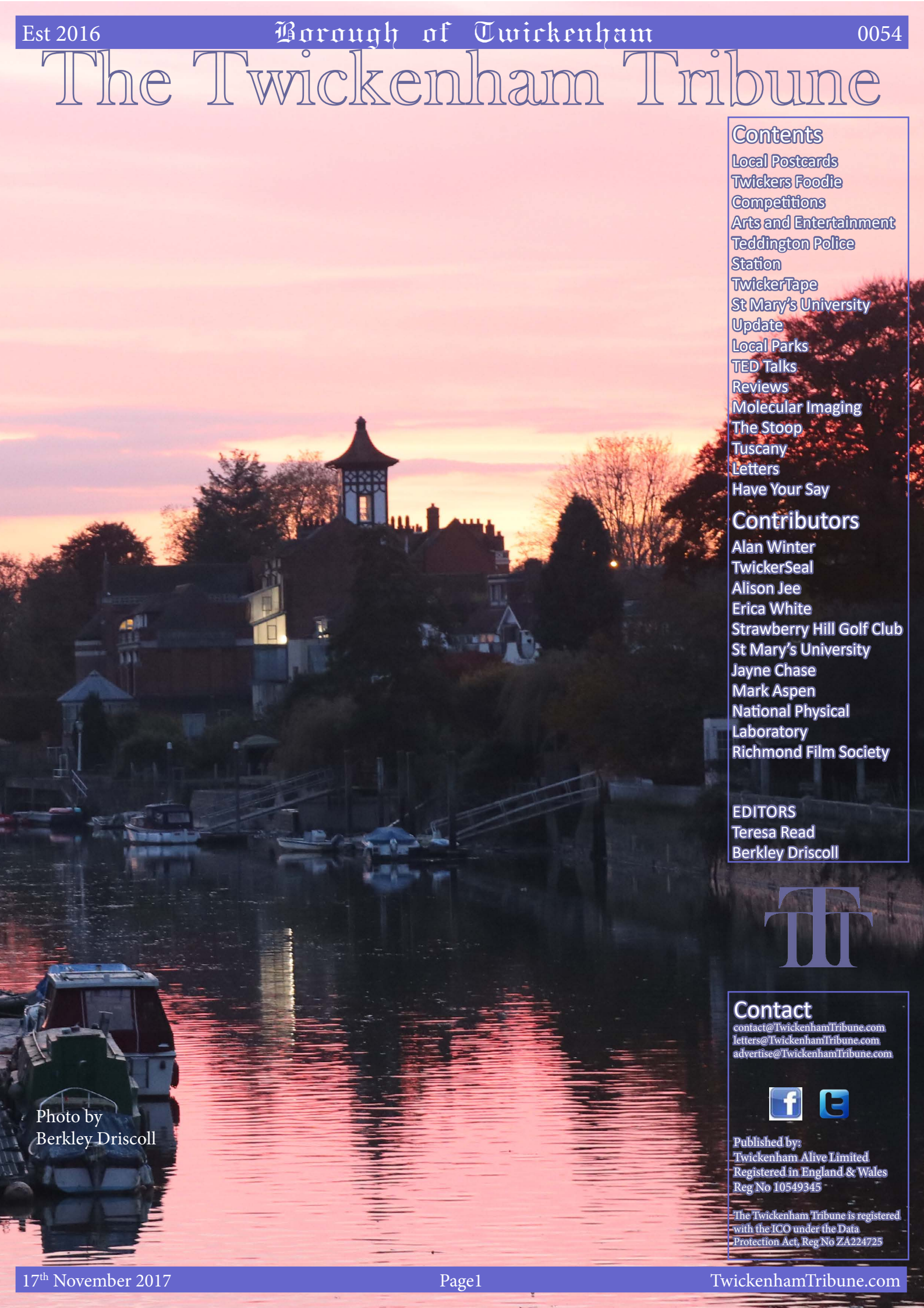


# The Twickenham Tribune



## Contents

- Local Postcards
- Twickers Foodie Competitions
- Arts and Entertainment
- Teddington Police Station
- TwickerTape
- St Mary's University Update
- Local Parks
- TED Talks
- Reviews
- Molecular Imaging
- The Stoop
- Tuscany
- Letters
- Have Your Say

## Contributors

- Alan Winter
- TwickerSeal
- Alison Jee
- Erica White
- Strawberry Hill Golf Club
- St Mary's University
- Jayne Chase
- Mark Aspen
- National Physical Laboratory
- Richmond Film Society

## EDITORS

- Teresa Read
- Berkley Driscoll



## Contact

[contact@TwickenhamTribune.com](mailto:contact@TwickenhamTribune.com)  
[letters@TwickenhamTribune.com](mailto:letters@TwickenhamTribune.com)  
[advertise@TwickenhamTribune.com](mailto:advertise@TwickenhamTribune.com)



Published by:  
 Twickenham Alive Limited  
 Registered in England & Wales  
 Reg No 10549345

The Twickenham Tribune is registered with the ICO under the Data Protection Act, Reg No ZA224725

Photo by  
 Berkley Driscoll

# THE LOCAL POSTCARD PAGE

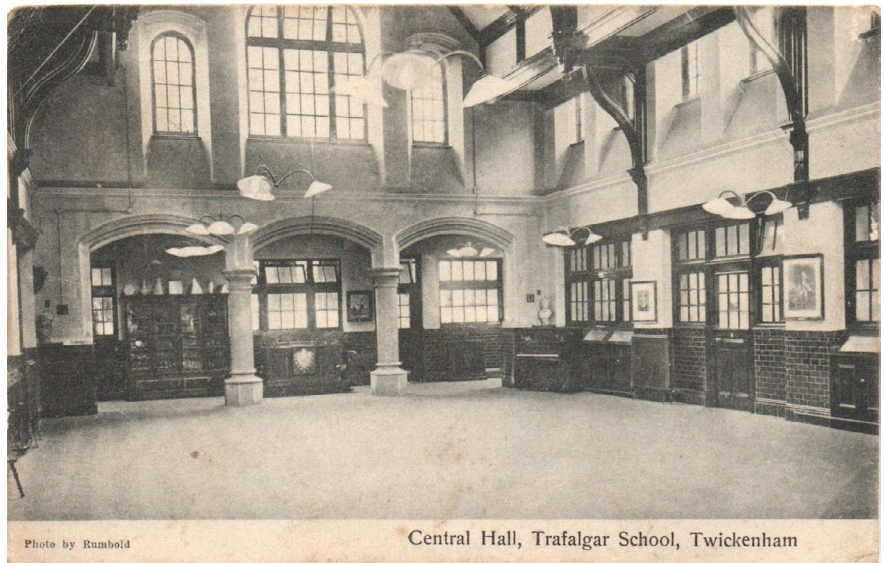
## PART 49 – TRAFALGAR SCHOOL

By Alan Winter

Our postcard this week dates back 110 years and was posted in 1907. It shows the Central Hall in Trafalgar School. I am told it looks pretty much the same today.

The first council school to be built in Twickenham was Trafalgar, in Third Cross Road. Temporary buildings were opened in 1904 and permanent ones, for 1,150 pupils, in August 1906. There were seven classrooms for children in the Infant School. Girls and boys were separated in the Junior School, where there were seven classrooms for the girls and seven for the boys.

On 21 October 1905, the centenary of the Battle of Trafalgar, the Trafalgar Schools' foundation stone was laid. The day that this stone was laid for the new school was a very special day. Not only did it give the school its name, it marks the centenary of one of the most famous naval battles in history, as well as the death of one of England's greatest and most respected naval heroes, Admiral Horatio Nelson. On the same date 100 years later, the school celebrated its centenary.



Today, Trafalgar Junior School is a community school. It is a three form entry school of about 350 pupils. As part of a Private Finance Agreement between the London Borough of Richmond and a private company, a completely new building was constructed in Meadway. This is the Early Years Centre which jointly accommodates the Infant School's reception class and a nursery run by a private company. The infants and junior schools share the original site and have seen building upgrades in recent years.

Trafalgar school is currently rated as "Outstanding" by Ofsted.

If you have any postcards to dispose of, any comments on this subject, or ideas for future articles, please drop me a line at

[alanwinter192@hotmail.com](mailto:alanwinter192@hotmail.com)

### POSTCARDS WANTED

Cash paid for Old Postcards

& postally franked envelopes.

Required by local collector / dealer.

Please ring Alan to discuss on

07875 578398

# TwickerSeal

Our intrepid reporter, TwickerSeal, is known as an advocate for removing parking from Twickenham Riverside, which currently blights this wonderful setting.

TwickerSeal can't understand why the council refuses to consider the issue of removing Embankment parking as part of its current development proposals, particularly as Francis Terry's original designs had shown a car free riverside.

What is also baffling is why the Embankment 'slipway' does not form part of the design proposal. As an avid member of Twickenham's Stand Up Paddleboarding club (Epic SUP), TwickerSeal would love to see the slipway made fit for purpose to encourage river activities

[www.EpicSUP.org](http://www.EpicSUP.org)



# Twickers Foodie

By Alison Jee

Ginger tends to be something that people adore, or hate. There is little middle ground, but I am firmly in the 'adore' camp. Its gentle, warming, spiciness enhances so many dishes, whether sweet or savoury. It has been used for thousands of years for its medicinal qualities and helps ease nausea and motion sickness. For Asian cooking, one tends to need fresh root ginger of course, but handy cupboard standbys are crystallised stem ginger and also stem ginger in syrup.

Try drizzling some chopped stem ginger and syrup over vanilla ice-cream and you'll lift a simple dessert to greater culinary heights. Crystallised stem ginger makes a lovely, homemade sweet when dipped into some melted chocolate. Both crystallised or bottled in syrup are brilliant ingredients for baking – and for sophisticated desserts, like the cheesecake recipe below.

With Christmas on the horizon, I thought this Ginger & Lime Cheesecake recipe from Opie's would make a refreshing change from mince pies, Yule log and Christmas pudding. And for those of you lucky enough to have lots of space in your freezer, you could make it in advance and just defrost to serve. Delicious, luxurious and impressive, this recipe is easy, yet perfect for entertaining and special treats.

What's more, the lovely folk at Opie's have offered one of you lucky readers a selection of their traditional Christmas goodies this week (see offers below for details).

## Ginger & Lime Cheesecake

Preparation time: 120 minutes

### Ingredients:

- 225g Ginger biscuits, crushed
- 115g Unsalted butter, melted
- 300g Full fat soft cheese
- 250ml Double cream
- 2 limes, juice and rind
- 4 tbsp Ginger syrup
- 8 pieces Opie's stem ginger, chopped

### Method:

1. Mix the biscuits with the melted butter and press into a ring mould.
2. Chill in the refrigerator for approx. 1 hour.
3. Lightly whip the double cream and then mix in the soft cheese followed by the ginger syrup and lime juice.
4. Add the stem ginger and lime zest and mix in thoroughly – leave some aside for decoration.
5. Spoon onto the biscuit bases and spread evenly over the surface.
6. Chill in a refrigerator for 2-3 hours until firm.

To serve – place the cheesecake on a serving plate and carefully remove from the mould.

Sprinkle a small amount of lime zest on the surface and then carefully arrange the remaining chopped ginger around the edge of the plate. Lightly dust with icing sugar.



# Offers and Competitions

## Win Store Cupboard Standbys from Opie's

One lucky reader of The Twickenham Tribune can win the following kitchen store cupboard essentials, courtesy of Opie's, and just in time for Christmas: Stem Ginger in Syrup; Pickled walnuts; Black cherries in Kirsch; cocktail cherries and sliced lemons (to jazz up those Christmas cocktails).



To enter, check out the Opie's website and find out when the company was founded. Send your answer, together with your name & postcode to [win@twickenhamtribune.com](mailto:win@twickenhamtribune.com) with the subject **Opie's**.

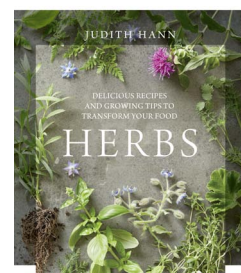


Closing date is midnight Sunday 26 November.

Winner of a family ticket to the 'Dreamworks Animation in Concert' UK tour is  
Lucy Leach, TW1

Winner of a copy of Herbs by Judith Hann is

Bruce Lyons, TW1



## Monthly Photography Competition

Win an 18 hole round of golf for 4 at Strawberry Hill Golf Club  
With a glass of wine or beer at the bar afterwards

Email your photo to [win@TwickenhamTribune.com](mailto:win@TwickenhamTribune.com)  
(include your name and postcode) All 4 players must play the same round.

**Photos of pets or wildlife, or any scenes taken within the local villages, ie Twickenham, St Margaret's, East Twickenham, Strawberry Hill, Teddington, Hampton Wick, Hampton, Hampton Hill and Whitton/Heathfield**

This competition is run in conjunction with [Strawberry Hill Golf Club www.shgc.net](http://www.shgc.net)



# Arts and Entertainment

by Erica White



Handel's **HERCULES** ends its run at the LAC on Saturday 19 November, presented by RICHMOND OPERA in a fully staged production and orchestra. Information: from [www.langdowndowncentre.org.uk](http://www.langdowndowncentre.org.uk)

Try to catch the last performance on Saturday, 18 November at 7.45pm of **BIG, The Musical**, presented by YAT at HHT in the main auditorium.

[www.yat.org.uk](http://www.yat.org.uk)

Booking is now open for TTC's Christmas production with children in mind is **WIND IN THE WILLOWS** by Alan Bennett in the Main Auditorium at HHT. This runs from Saturday 9 - Saturday 16 December, 7.45 eves, Sunday at 6.30, Sat. mats at 2.30. [www.teddingtontheatreclub.org.uk](http://www.teddingtontheatreclub.org.uk).

Next at HHT, in the Studio, is a double bill of one-act plays by local master, Noel Coward. TTC presents **STILL LIFE & RED PEPPERS**, two very different plays. Sunday 19 -Saturday 25 November, 7.45pm eves, Sunday, 6.30.(NO perf. Fri.24). [www.teddingtontheatreclub.org.uk](http://www.teddingtontheatreclub.org.uk).

Booking is also open for **THE RAILWAY CHILDREN** adapted by Mike Kenny, presented by RSS at MWT also from Saturday 9 - Saturday 16 December, eves, 7.45, Sunday 3.00, Sat.mats 3.00. (NO perf. Weds).

**THE HAMMOND THEATRE** at Hampton School hosts the live streaming from the National Theatre of **FOLLIES** in its Encore season, followed by **THE SNOW DRAGON** on 24 at 5.30 & 25 at 11am & 2pm, 25 November.

[www.thehammondtheatre.co.uk](http://www.thehammondtheatre.co.uk)

A new exhibition, **TRICKS OF LIGHT**, opens at the **ORLEANS GALLERY**, Twickenham Riverside, 25 November - 13 January. This show brings together contemporary artists working in a range of media exploring the interplay and effects of light in art. [www.richmond.gov.uk/arts](http://www.richmond.gov.uk/arts)

LAC presents the first of the Christmas craft fairs this weekend, **SPARKLE** 17-19 November, Fri, 6-8.30, Sat & Sun, 10am-5pm, [www.landmarkartscentre.org](http://www.landmarkartscentre.org)

**TWICKENHAM JAZZ CLUB's** regular Tuesday night on 21 November at 8.30 at **THE CABBAGE PATCH** features **PETE OXLEY** and **NICHOLAS MEIER** playing a dazzling programme of contemporary music, from Turkey to Latin America to England on a variety of differently stringed guitars. They will be joined by Raph Mizuki (bass) and Parul Cavacuiti (drums).

## Christmas Events

Twickenham Christmas Lights Switch On Event - 2-5pm Sunday 26th November outside Santander Bank and Twickenham Green.

Whitton Christmas Lights - 12-5pm Sunday 26th November with the award winning Kneller Hall Music Band.

The famous Teddington Lights UP - 4-9pm Thursday 30th November sponsored by the LENS BURY with chosen charity RUILS and a Lantern Procession.

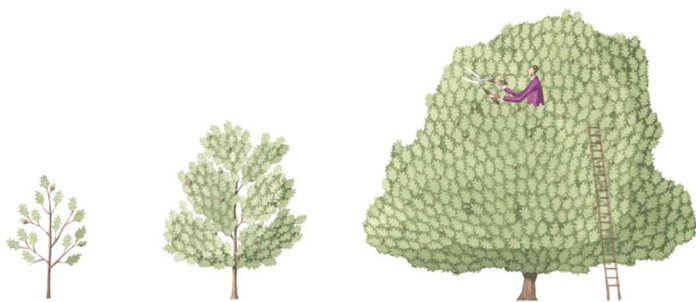
“Church Street Festival of Lights” - Saturday 2nd December - Markets

East Twickenham Christmas Lights with Chairman Perminder, Local Councillors & The Mayor - 5pm Friday 24th November across the road from Thames Travel Agents.

Hampton Hill Christmas Parade - Friday 24th November 5pm

Hampton Wick Christmas Event - 5pm Wednesday 13th December outside SIGMA Cycling Shop

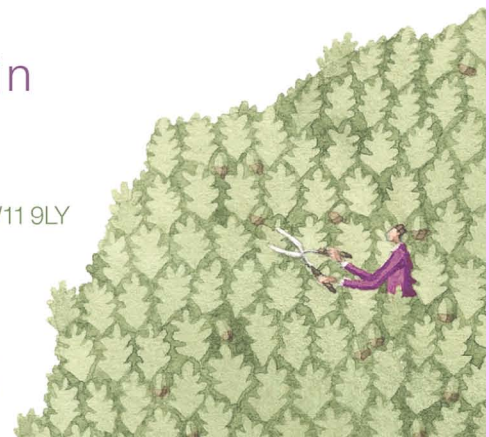
St Margaret's Christmas Fair - Sunday 10th Dec on Crown Road with Reindeer.



**The Tree Agency**

darryl parkin

The Treehouse  
25 King Edwards Grove  
Teddington, Middlesex TW11 9LY  
Telephone 020 8274 0107  
Mobile 07960 123580  
Fax 020 8274 0119  
info@thetreeagency.co.uk  
www.thetreeagency.co.uk



*The Tree Agency*

# Teddington Police Station Closure

Teddington Police station is to close along with many others across London. Despite the efforts of the borough commander, Chief Superintendent Parm Sandhu, the decision was made that lack of footfall made it impossible to justify the resources involved. On average Teddington police station has one visitor per day.

MP Vince Cable said: "This decision to close Teddington and many other police stations across London is being made on the basis that they are modernising their services and making them more accessible via on-line reporting and Twitter and speeding up the 101 service. All these changes must now be delivered to justify these changes. Most importantly we must protect officers dedicated to specific wards and ensure we see no further cut in the number of police officers and PCSOs."

"The police have suffered serious cuts in the last few years and we are now beginning to see a reversal in the trend of falling crime. It is essential that the police are properly supported so that we don't see a return to the situation of understaffed policing and rising crime that we had before I first became an MP in Twickenham."

## Twickenham-based Psychotherapy, Counselling & Self-development



### My role is to aid you to be yourself more fully.

We all experience blocks that impede this realisation – the most troublesome ones may lie outside of awareness. This is where I can help.

I work in private practice with both individuals and couples – for details please visit my website.

*'Such an eye-opener! I never dreamed there was so much to me – so many different layers. I really appreciate your patient support and, at times challenge' - Advertising Executive, Richmond*



<https://chrismurphypractice.com>

[chris@chrismurphypractice.com](mailto:chris@chrismurphypractice.com)

07477663383

Twickenham



Dr. Chris L. Murphy

Dr Chris Murphy – official healthcare provider for:



## Special Offer

Dr Chris Murphy is offering a free initial (hour-long) counselling and psychotherapy therapy session, either for **one individual or a couple** (normally priced at £80 individual and £120 for couples), To win an hour long session email [chris@chrismurphypractice.com](mailto:chris@chrismurphypractice.com)



# CHRISTMAS DAY LUNCH

The Churches in Teddington are once again organising a lunch in Elleray Hall on Christmas Day for the elderly and others who might otherwise be alone that day. If you, or someone you know, might appreciate attending the lunch, put them in touch with Colin and Elizabeth Hicks (contact details below). The lunch will be accompanied by entertainment, mince pies and other refreshments.

Volunteers are also needed to give people lifts to and from the lunch, to help with the preparations and to serve the food. Many of the volunteer tasks can be fitted around a family Christmas. This could be all the more enjoyable for having helped to give some folk, who might otherwise be alone, a truly happy Christmas. The Hampton Fuel Allotment Charity is generously supporting the lunch but additional donations are also welcome both of money but also of small gifts for the guests at the lunch.

To register attendance, or to offer help, contact: Colin and Elizabeth Hicks:  
tel 020 8977 8000 or email: [office@teddingtonbaptist.org.uk](mailto:office@teddingtonbaptist.org.uk)

## LET'S LIGHT UP TWICKENHAM!

**DON'T  
MISS  
IT!**



### AN AFTERNOON OF CHRISTMAS FUN!

**SUNDAY 26TH NOVEMBER 2017, 2.00 – 6.30PM**

- Free rides on the **Victorian Galloping Horse Carousel** (Twickenham Green)
- Free rides on **The Santa Express Land Train** (King Street)
- **Live Reindeer and Gruffalo** visiting on Diamond Jubilee Gardens
- Free face painting in Johnson's Shoes
- Music from the spectacular **Royal Military School of Music Brass Marching Band**.

### DON'T MISS THE CHRISTMAS TREE LIGHTS SWITCH ON!

- Twickenham Green at **4.40** (approximately)
- King Street at **5.30** (approximately)



Find out more at  
[www.trytwickenham.com](http://www.trytwickenham.com)

Entertainment, Christmas Lights and Christmas Trees courtesy  
of Try Twickenham Businesses and our sponsors



# TwickerTape - News in Brief

RG. I. PR. . . . . A. AJ. . . . . SS. I. . . . . ST. . . . . SF. I. PR. . . . .  
200.8 1/2 . . . . . 66.92 3/4 . . . . . 20.99 . . . . . 16 1/8 . . . . . 76

## Hampton Christmas in the Square

The annual 'Christmas in the Square' event will take place on Friday 1st December between 4pm and 7pm, with the Deputy Mayor of Richmond, Councillor Benedict Dias, kicking off the festivities by turning the Christmas lights on in Hampton Square

## Young musicians to play in Festive Concert at Clarendon Hall

More than 60 young musicians will come together at Clarendon Hall for the Richmond Music Trust Concert from 2.30pm on 10th December.

The Festive Brass Concert, now in its seventh year, will raise money for the Mayor's Charities. The line-up includes ensembles from Richmond Music Trust, Fulham Brass Band and the newly re-established Richmond Brass Band.

## Council launches new scheme for residents at risk of slipping on ice

Residents who may be at risk of slipping on their driveways and footpaths are being encouraged to take advantage of the Borough's newest community initiative.

The Council will be offering residents the option to collect up to 50kg of free rock salt to assist in the clearance of footpaths and to make areas safer for their use:

## Consultation on Heathrow Expansion

Have your say online, go to: <https://www.gov.uk/government/consultations/heathrow-expansion-revised-draft-airports-national-policy-statement>

## The Thames Dolphin

The results of the post mortem on the Thames Dolphin have been released by the Cetacean Strandings Investigations Programme (CSIP). It would appear it was already poorly when it made its way upriver.

[https://m.facebook.com/story.php?story\\_fbid=1761802987195330&id=142706582438320](https://m.facebook.com/story.php?story_fbid=1761802987195330&id=142706582438320)

## Bushy Park Deer Cull

From the morning of Wednesday 1 November to Friday 15 December 2017, the vehicle gates to Bushy Park will be locked at 7:00pm and the pedestrian gates at 10:30pm, Sunday to Thursday. All gates will be unlocked between 7:30am and 8:00am.

## RFU unhappy with state of pitch after NFL game

The RFU is complaining to the NFL after the Twickenham turf was damaged by pitch markings from recent NFL games..

It is understood the NFL used a different type of paint for this year's fixtures that groundsmen, was unable to remove before England's game against Argentina on Saturday.

STRAWBERRY HILL GOLF CLUB

# ADULT ACADEMY TASTER SESSIONS NOW BOOKING

Contact our Professional Peter Buchan

**07795 973926**



## Strawberry Hill Golf Club

Wellesley Road, Strawberry Hill, Twickenham TW2 5SD

**Tel:** Club Manager 020 8894 0165

**Email:** [secretary@shgc.net](mailto:secretary@shgc.net)

**To find out more visit:** [www.shgc.net](http://www.shgc.net)



Places People Play



## ACROSS

- |                                      |   |
|--------------------------------------|---|
| 1) "The ___ Reed Show"               | 43) Viral internet item                     |
| 6) Garden bulb                       | 44) Fiery funeral mounds                    |
| 11) Impressive degree                | 46) Trials and tribulations,<br>essentially |
| 14) Steer clear of                   | 48) Subsidy                                 |
| 15) Protective layer                 | 49) Part of a foot                          |
| 16) Apiece, in scores                | 51) Protein, often                          |
| 17) Wood lighters?                   | 52) Genetic material                        |
| 19) Game for "it"                    | 53) Freeway catastrophe                     |
| 20) "Yo!"                            | 56) Offspring acquired by<br>marriage       |
| 21) Shake a leg                      | 58) "Aviv" header                           |
| 22) Dream Team country               | 59) Bird that can't take flight             |
| 23) Involve deeply                   | 60) Address for a dot-com                   |
| 27) Emancipate                       | 61) Foreman vanquisher                      |
| 29) Secret agent org.                | 62) Old cinema star                         |
| 30) Carve in stone                   | 68) Felt topper                             |
| 32) Like a pink steak                | 69) "+" pole                                |
| 33) Guinness World Records<br>suffix | 70) Barely leading on the<br>scoreboard     |
| 34) Put off                          | 71) Service charge                          |
| 36) Health store beans (var.)        | 72) Have a hunch                            |
| 39) Brought into play                | 73) Three-player cardgames                  |
| 41) Some bays                        |   |

## DOWN

- 1) Beaver's work
- 2) Egg cells
- 3) "Ask \_\_\_ what your country ..."
- 4) Corner of the market
- 5) Clung
- 6) Young'un
- 7) Certain machine gun
- 8) Ness and Lomond
- 9) More like a squid's defense
- 10) Former Spanish coins
- 11) Time for the elderly?
- 12) World-weary
- 13) Pond buildup
- 18) It may be beaten or bucked
- 23) Become frozen
- 24) Hip-hop's Elliott
- 25) Appear in thin air
- 26) Brilliant acclaim
- 28) Gift tag word
- 31) Female seal group
- 35) Affirmative responses
- 37) Acid type
- 38) It's hardly a convertible
- 40) Some animal shelters
- 42) Lady Liberty, for one
- 45) Frameworks
- 47) Common sound systems
- 50) Caring and decent to others
- 53) Group on the payroll
- 54) Donnybrook
- 55) Stage, as a show
- 57) Sound of a BB striking tin
- 63) Things displayed at checkpoints
- 64) "Originally named"
- 65) Narc's org.
- 66) Caught off base
- 67) CD predecessors

## PIN CUSHION?

By Timothy E. Parker

1	2	3	4	5	6	7	8	9	10	11	12	13
14					15						16	
17					18						19	
			20				21				22	
23	24	25				26		27			28	
29				30			31		32			
33				34				35		36		37 38
39			40		41				42		43	
44				45		46			47		48	
		49			50		51				52	
53	54					55		56			57	
58				59				60				
61				62			63 64				65 66 67	
68				69					70			
71				72					73			

Solution on Page 26

# St Mary's University Update

## Centre for Social Innovation and Global Public Service at St Mary's Signs Major Partnership with Georgetown University McDonough School of Business

The Centre for Social Innovation and Global Public Service at St Mary's University, Twickenham and Washington DC's Georgetown University McDonough School of Business are delighted to announce a new trans-Atlantic partnership.

The news of this significant partnership comes just weeks after the Centre's Harvard backed launch and news of its ground breaking new MScs in Social Innovation and Global Enterprise Policy and Social Innovation and Global Public Service.

Speaking at the event, Penny Mordaunt MP, the new Secretary of State for International Development, said, "I'm really excited, this education programme enables people to meet the challenges they're going to face when working in this space." To her support, voices of civil society and other government leaders were added following the signing of the MOU.



Rt Hon Greg Clark MP, Secretary of State for Business and Industrial Strategy said, "The UK has a world-leading reputation for academic excellence and through our Industrial Strategy the UK is committed to building on this excellence and fostering collaboration on crucial issues. The international partnership announced between St Mary's and Georgetown is a brilliant example of this, with UK academics working with their US counterparts to complete mutually-beneficial education and research."

Chief Executive of the Chartered Association of Business Schools Anne Kiem added, "I think this is fantastic news as it is increasingly important for universities to build international links. Hopefully this is the start of a very productive partnership between St Mary's and Georgetown that will benefit all students involved."

Internationally recognised NGO leader and Director of CAFOD Chris Bain, remarked, "CAFOD and Caritas are passionate about building the skills and talents of the next generation. This collaboration and these programmes have so much to offer."

The partnership will have St Mary's postgraduate students following the Centre's courses and benefitting from teaching and learning opportunities on Georgetown's US and Doha campuses. Meanwhile, the two partners will jointly develop new leadership executive programmes for those in senior positions across the UK and wider EU public, private and civic sectors.

Centre Director, Prof Francis Davis said, “This is a beginning. Georgetown is ranked highly in America for finance and the step change learning in both directions will support the Centre’s plans to establish itself as a niche initiative of international excellence in its field.”

The MOU was signed by St Mary’s Pro Vice Chancellor John Brewer, and Paul Lambert on behalf of the Dean of the McDonough School of Business Paul Almedia, during a visit to the St Mary’s campus.

St Mary’s Vice Chancellor Prof Francis Campbell said of the partnership, “The new Centre for Social Innovation and Global Public Service has launched with great promise. Having already agreed partnerships and met with leaders around the world, this new partnership with Georgetown University will take the Centre to the next level and bring great benefits for students.”

The MOU also opens up further opportunities which are currently under discussion. Pro Vice-Chancellor for Global Engagement Prof John Brewer said, “We are excited to be partnering with Georgetown, there are many areas of potential shared collaboration in the future and I look forward to exploring these in future discussions with them.



St Mary's  
University  
Twickenham  
London

## National Lottery bids for local First War legacy project

The Heritage Lottery programme has created a fund awarding grants of £3,000 to £10,000 for local projects looking at the legacy and impact of the First World War. (First World War: then and now [www.hlf.org.uk/firstworldwar](http://www.hlf.org.uk/firstworldwar))

MP Vince Cable has encouraged local societies and individuals to come forward and apply for the awards: “In Twickenham we have a rich history. And like many communities, it was shaped by the First World War and its aftermath. I would encourage residents to come forward and use the money from the Heritage Lottery Fund to explore its legacy further.”

“When I read Sebastian Faulk’s great classic, Birdsong, I realised that it originated in the discovery of a box of letters found in an attic in Twickenham.”

“More recently, a local resident, Mark Hastings, organised the Passchendaele march in commemoration of his grandfather.”

“The Lottery Fund has so far given £26.8 million in grants to 122 projects in Twickenham. It is a great source of funding.”

## Bushy Park Photographs in the 2018 BBC Countryfile Calendar

No less two of the photographs that appear in the 2018 BBC Countryfile calendar are photographs taken in Bushy Park.

The April winner is a picture of two seagulls taken in Bushy Park by Sue Lindenberg - a Teddington resident.

Another winner, Jarek Kurek (also the overall winner), is the July page of the calendar, again the shot was taken in Bushy Park.

[www.countryfile.com/article/countryfile-tv-show-countryfile-calendar/finalists-vote-how-to-buy-countryfile-calendar](http://www.countryfile.com/article/countryfile-tv-show-countryfile-calendar/finalists-vote-how-to-buy-countryfile-calendar)

The BBC Countryfile calendar is sold with the proceeds going to Children in Need, and I understand that this Friday is Children in Need day.

## Local Parks Bid for 'UK Best Parks'

Three local parks have been nominated for the 'UK Best Parks' award: Crane Park,

Marble Hill Park and the Woodland Gardens in Bushy Park. The award is made by a charity called Fields in Trust, which includes the National Playing Fields Association. The announcement is on November 29.

Vince Cable, MP, said that the three parks, based in the Twickenham constituency, are "enormously valued and are a large part of what makes this part of London so good to live in." He added: "I have a particular soft spot for Crane Park. It was once derelict and neglected, but enormous hard work, led by local volunteers, has cleaned up the river valley and stopped encroachment by development as on the old Mereway allotments, now a nature reserve. I often walk and cycle the path up the river towards the Shot Tower and it is one of the hidden treasures of Twickenham."



The Oven Man®

Let your oven  
*sparkle*  
this Christmas

Your local independent  
oven cleaning,  
spares and repair service

[www.ovenman.co.uk](http://www.ovenman.co.uk)  
Call 020 8185 7069

# Celebrated TEDx Talks Comes to the Rose Theatre in Kingston

Jayne Chace on behalf of TEDx Talks, Kingston

TED Talks are influential presentations given by people who have credibility in a field and have ideas worth sharing. The topics are wide ranging and the audience for online videos is global. However, on 20th January 2018, you can see some new TED Talk speakers in person at the Rose Theatre in Kingston when TEDx KingstonUponThames presents a full day programme of live talks on the theme 'Out of Order'.

The only constant is change. It's all around us - at home, at work, online, offline, in our city streets, our phones and in the way we view the world. Change is disconcerting yet exciting and that is why we have chosen to explore the theme of "Out of Order for the 20 January TEDx Talks at the Rose Theatre.

"Out of Order" can have many different interpretations. The phrase can indicate change, disruption, sub-cultures, a broken situation, radical solutions or a different way of looking at things - from technology and design to adventure, culture and the way we live and work now and in the future. Our speakers will delve into a wide variety of challenging topics such as:

- Managers – Who Needs Them
- How to Feed 9 Billion People
- Could a 4 Year Old Change the World
- Challenging the Middle Eastern Myth

View the full line-up of speakers at our web site [www.tedxkingstonuponthames.com](http://www.tedxkingstonuponthames.com)

TEDx is a global programme of independently-organised events based on the world-famous TED Talks model. Through a day-long event of live talks and performances, TEDxKingstonUponThames – entirely not-for-profit and run by volunteers – strives to bring our community together and spark meaningful discussions.

After a sell-out success for the inaugural event in November 2016 at Kingston University, we are expanding on a grand scale to become one of the largest TEDx events in London. Nicholas Rogers, chairman of TEDxKingstonUponThames, said, 'The local community is at the heart of our events and we've been touched by the hugely positive response to our efforts. We're a group of volunteers who do this because we love TED and we could not succeed without the support of local people.'

**TEDx**  
**KingstonUponThames**  
x = independently organized TED event



# CrusaderTravel

Escapology Experts

[crusadertravel.com](http://crusadertravel.com)



## **UNDER THE TUSCAN SUN**

FOR AN ECLECTIC OFFERING OF  
VILLA & APARTMENTS OF ALL  
SHAPES AND SIZES JUST CALL

**020 8744 0474**

# Check In With Your Inner 'Big' Kid

## Big the Musical



Mark Aspen

[www.markaspen.wordpress.com](http://www.markaspen.wordpress.com)

Expressing the art of the theatre critic

by David Shire and Richard Maltby Jnr  
YAT at Hampton Hill Theatre until 18th November  
Review by Georgia Renwick

However many years pass by, we never entirely forget what it is to be young. *Big the Musical* is a nostalgic night out which will have you asking, when did you last check in with your inner 'Big' kid?



Josh is two weeks from thirteen, a normal kid decked out in 80's backwards cap and jacket with a family, his dorky best friend Billy and a crush who doesn't know he exists. I can relate - at thirteen, I wouldn't leave the house without my 'trademark' over-knee stripy socks and though I went on my first date, we ate McDonalds and saw *School of Rock*, this was hardly the pinnacle of romance and I felt every bit as awkward.



What these were however, were formative experiences. But formative experiences are not what Josh is looking for, and weeks from his thirteenth birthday, rejected and humiliated by his crush at a carnival, Josh loses patience and wishes to a spooky old carnival machine to become "big". It isn't any old carnival machine, and the next morning he wakes up in pyjamas many, many sizes too small - his wish has been granted. Left to navigate the grown-up world

alone while Billy searches for the solution, will Josh learn to love the Big world of jobs and cars and money, or will the love of his best friend and family win-out over the possibility of unlimited toys and blossoming romance? ... ..

Read on at  
[www.markaspen.wordpress.com/2017/11/16/big](http://www.markaspen.wordpress.com/2017/11/16/big)  
*Photographs by Sarah J Carter*



# A Thrill and a Chill

## Picnic at Hanging Rock

by Tom Wright



Mark Aspen

[www.markaspen.wordpress.com](http://www.markaspen.wordpress.com)

Expressing the art of the theatre critic

Wild Duck Theatre at OSO Arts Centre, Barnes until 18th November

Review by Georgia Renwick

On a cold, foggy, November night, you might think a trip to sunny Australia, via the OSO Arts Centre, Barnes, would be the perfect antidote, but if you take a trip to Picnic at Hanging Rock this week, expect a thrill - and a chill.



Tom Wright's adaptation, which premiered in Australia, of Joan Lindsay's novel, Picnic at Hanging Rock tells the tale of the disappearance of several schoolgirls and their teacher during a picnic out in the bush at the turn of the 20th century. In their virginal white corsets and silk petticoats, three layers thick, curiosity draws them across the threshold of their strict boarding school upbringing to venture out into the wilderness. What unfolds will never be fully uncovered, but the girls, and the community, will never be the same again.



The 80-minute play, which runs all the way through without a break, is held in masterful suspense by excellent acting and a high level of sound and lighting design. Wild Duck Theatre's very accomplished cast multi-role, allowing them to show their acting strengths and to work together as a seamless ensemble.

But this is no ordinary 'who-dunnit' turn-of-the-century tale of mystery. The girls do not appear to disappear into the hands of a stranger, but into the arms of Australia itself, a "sea of flame", an ancient land where lava bubbles under the surface of their white-gloved world of "refinement". Do the girls wonder willingly into the wilderness, or are they taken back by its raw and unwieldy power? ... ..

Read on at:

[www.markaspen.wordpress.com/2017/11/15/hang-rock](http://www.markaspen.wordpress.com/2017/11/15/hang-rock)

*Photographs by Marc Pearson*

View video slideshow at:

[www.video214.com/play/4qLjPx00Agdf00QIftiUA/s/dark](http://www.video214.com/play/4qLjPx00Agdf00QIftiUA/s/dark)



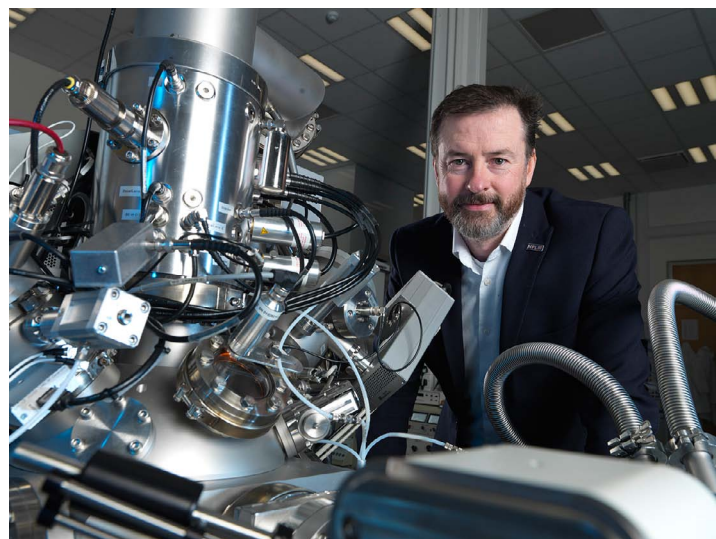
## NPL launches innovative molecular imaging instrument to provide new insights into drug discovery and cell biology

The National Physical Laboratory (NPL), in Teddington, this week launched 3D OrbiSIMS to provide label-free 3D image of drugs and metabolites with sub-cellular resolution. Unique to NPL, and developed with GSK, ION-TOF, Thermo Fisher Scientific and the University of Nottingham, 3D OrbiSIMS will provide new insights into drug discovery.

3D OrbiSIMS is a new technology with the highest reported simultaneous spatial and mass resolutions. Such high-performance is essential to reveal the biomolecular complexity in a single cell. The new technology is reported in a Nature Methods paper published today<sup>1</sup>. The concept was created by Prof Ian Gilmore, at the National Physical Laboratory, who led the multidisciplinary team with experts in drug discovery at GSK and pharmaceutical science at the University of Nottingham and two leading mass spectrometry companies, ION-TOF GmbH and Thermo Fisher Scientific, which developed the instrument's technologies and integrated them into a single platform.

It typically costs around £1.4 billion to produce a new medicine<sup>2</sup>. This cost could be reduced if candidates that fail at late stage were identified earlier. Currently, one of the major challenges is to measure the intracellular drug concentration. As identified in the Maxwell Report<sup>3</sup>, high-resolution molecular imaging of drugs in the body is crucial in improving the effectiveness of drug discovery, by shedding light on fundamental biological processes, and revealing the drug distribution at the cellular level and across the body. The 3D OrbiSIMS could help identify where drugs go at the cellular level to help answer long-standing questions about whether drug concentrations are sufficiently high in the right places to have a therapeutic effect, or if the medicine is lodging within cellular components and causing toxicity. If anomalies were spotted earlier it might help to explain toxicities or lack of efficacy of a medicine and reduce costly late-stage failures.

In basic biology, there is a growing realization that cells, even of the same type,



*Prof Ian Gilmore – Photo NPL*

have tremendous variability. Breakthroughs in genomics are beginning to reveal this single-cell heterogeneity. Super-resolution optical microscopy (Nobel Prize in Chemistry 2014) with the use of fluorescent labels has shone a new light on proteins, the machinery of life, with exquisite sub-cellular resolution. However, the fluorescent labelling strategy is not appropriate for drug molecules and metabolites (small but important molecules) that are dynamically created and consumed. The world of these metabolites at the single-cell scale remains mysterious and elusive.

Professor Ian Gilmore, Senior NPL Fellow and founder of the National Centre of Excellence in Mass Spectrometry Imaging (NiCE-MSI) at NPL, says:

*“Mass spectrometry imaging is a rapidly developing method for biomedical imaging allowing new insights into fundamental biology and pharmacology. The 3D OrbiSIMS is an exciting new advance as it pushes the boundaries for label-free molecular imaging to the single-cell scale. This is beginning to reveal a surprisingly large heterogeneity of single-cell drug uptake and the effects of the drug on metabolites. This is a major step in realising our dream of achieving ‘super-resolution’ metabolic imaging.”*

John Lepore, Senior Vice President for Pipeline and Discovery at GSK, says:

*“Advances in the physical sciences and engineering are accelerating a revolution in healthcare. I am delighted that a multidisciplinary team, led by NPL in collaboration with GSK, has made a leap forward in high-resolution molecular imaging, the 3D OrbiSIMS. This powerful new capability allows the detection of drugs and metabolites with sub-cellular resolution, giving us the possibility of determining the precise distribution of a medicine and the effect it has, even within a cell. This will have important consequences for discovering, testing and making medicines.”*

The 3D OrbiSIMS is already having impact on UK industry by providing new insight into technological problems where having the right molecules in the right place matters.

#### References

‘The 3D OrbiSIMS – Label-Free Metabolic Imaging with Sub-cellular Lateral Resolution and High Mass Resolving Power’, Passarelli et al., Nature Methods, DOI 10.1038/nmeth.4504.

‘How to improve R&D productivity: the pharmaceutical industry’s grand challenge’, Paul et al., Nature Reviews Drug Discovery, DOI 10.1038/nrd3078.

‘The importance of engineering and physical sciences research to health and life sciences’, Engineering and Physical Sciences Research Council, 2014.



# UNDER THE TUSCAN SUN

By Emma Cordingley and Bruce Lyons

My parents bought their first house in Italy in the mid-1980s, Casa Gorgacce was an old tumbledown farmhouse situated almost right on the Tuscany-Umbria border in the Niccone Valley which weaves along between these two regions. After making it into a comfortable place to stay they began to rent it occasionally to British holidaymakers, the first person who rented it was June Brown (Dot Cotton) of EastEnders fame! They were so successful with their rentals that their Italian neighbours asked them to rent their properties too and so a little business was created.



My husband Martin and I with our 1 year old daughter moved to the area in 1999 having bought our own ruin 6 miles further down the Niccone Valley. This we turned into a 5 bedroom, 4 bathroom country house for holiday rentals with heated swimming pool and hot tub. Since then we have run our family rentals agency with generally about 30 properties on our books, mostly private houses with pools and all within one hour's drive of our own house, and that means we can look after all our guests.

In our 19 years living in Umbria there have been small changes; we can now fly to Perugia which is a real boon and the number of excellent restaurants near to us has increased. The Niccone Valley remains remarkably unchanged however, it still has the same slowed down pace and hasn't become over-run with tourists. It is a stunningly beautiful valley of green hills of oak and chestnut with vineyards and olive groves, stone houses and a good number of castles, some lived in, some ruined and all states in between. In the spring it is bursting with wild-flowers and it has autumn colours to rival New England.



To the west of The Niccone Valley is the ancient and spectacular Tuscan town of Cortona (where Under the Tuscan Sun is set) and Lake Trasimeno, the 4th largest lake in Italy. To its east is the market town of Umbertide with good connections to other Umbrian towns. Within one hour's drive of most of our houses you can be tasting wines in the vineyards of Chianti, or in beautiful Siena famous for its Palio. The Umbrian towns of Perugia, Gubbio, Todi, Assisi, and Orvieto may be less well known than their Tuscan counterparts but they are no less worth visiting for their history, architecture and art treasures.

Locally in the valley we enjoy our seasonal festas from spring to autumn. Martin qualified as an Italian sommelier a few years ago and now runs wine tours and tastings at our local vineyard and to which we invite all our guests. Bruce and Hedda Lyons, as old friends and neighbours of my parents have been close associates of ours since the beginning of our company and we are very happy to still have our Twickenham connection.

Note from Bruce,

We met David & Dilys, Emma's parents years ago and we worked together over the years, they introduced us to Michael and Clio (once a Rank starlet) who owned an extraordinary hill top Mansion which they ran as a hotel – Rasina, slightly reminiscent of Faulty Towers. We also co-owned a pretty farmhouse, Peschino, for a few years. Today we are delighted to continue our work with Martin and Emma, know the area well and can source a property to suit a millennia of needs – just ask Crusader Travel

# Photographs from the River Crane Sanctuary

Courtesy of Sammi Macqueen



Bonfire on River Crane Metropolitan Land:

<https://www.flickr.com/photos/18554479@N05/sets/72157666077786099/with/37560435204>

River Crane Sanctuary Website:

<http://e-voice.org.uk/rcs/>

**Sparkle!**  
CONTEMPORARY CRAFT & GOURMET FOOD

17-19 November 2017  
Friday 6-8.30pm and  
Saturday & Sunday 10am-5pm

**Admit 2for1**  
Not to be used in conjunction with any other discount offers

Admission £4  
Seniors/students £3  
AC members and under 16s free

Your sparkling festive season starts here!  
See and buy a dazzling range of contemporary work from more than 70 designer makers including jewellery, glass, ceramics, stylish accessories and so much more, plus a mouth-watering selection of gourmet food. Hundreds of bright and bold gift ideas

Train: Teddington OR  
- avoid transfer  
- segregated walk  
Bus: 490, 261, 262  
Car: No parking on site  
Free parking on surrounding streets  
For disabled parking details please telephone

**LANDMARK ARTS CENTRE**  
Ferry Road, Teddington TW11 9NN  
020 8977 7558 [landmarkartscentre.org](http://landmarkartscentre.org)  
Charity no 1047080

The advertisement features a large pile of colorful, spiral-shaped jewelry in shades of blue, green, orange, and red. There are also small images of a bowl of food and a plate of food.

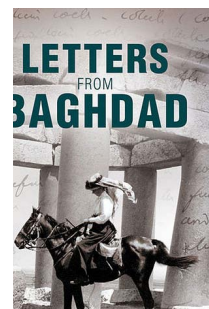
# RICHMOND FILM SOCIETY

See [www.richmondfilmsoc.org.uk](http://www.richmondfilmsoc.org.uk) for details of the full 2017/18 Programme and membership, which is £60 (i.e. £4 per film). Tickets are available on the night for non-members at £6.

**The first half of the fifteen film season comprises the following films:**

## 28th November – Letters from Baghdad (UK)

Voiced by Tilda Swinton, this documentary explores the extraordinary life of English writer, archaeologist, diplomat and spy Gertrude Bell. Openly critical of colonialism, Bell offered a counterpoint to typical British all-male power; and her views on the future of the Middle East were prescient.



## 12th December – The Other Side of Hope (Finland)

A poker-playing restaurateur meets a Syrian refugee just arrived in Finland. Kaurismäki creates a drama/comedy around Europe's immigration issues in his characteristically lugubrious and deadpan style



The Tribune winner for the Richmond Film Society competition attended the screening of Tangerines on 14 November

## TANGERINES

Country: Estonia/Georgia, 2015 Directors: Zaza Urushadze  
Music: Niaz Diasamidze & Levan Kikvidze

Leading Players:

Lembit Ulfsak (Ivo)	Giorgi Nakashidze (Ahmed)
Elmo Nüganen (Margus)	Misha Meskhi (Nika)
Raivo Trass (Juhan)	Zura Begalishvili (Aslan)



Tangerines is the Oscar-nominated Estonian film from Zaza Urushadze, based on the Civil War in the Apkhazian region in 1992-1993, following the dissolution of the Soviet Union.

Estonian actor Lembit Ulfsak plays Ivo, a carpenter whose family and their community have fled back to Estonia. His reasons for staying are unclear, only to help his farmer friend Margus (Elmo Nüganen) and his tangerine crop. Ivo ends up taking the last men alive from the warring Chechens and Georgians into his house. The Chechen is Ahmed (Giorgi Nakashidze), and the more seriously wounded is a Georgian, Niko (Mikheil Meskhi). Both are in no fit state to fight, but that doesn't stop them threatening each other to the death.

Ivo may be old and hospitable, but in his house it's his rules, and since he saved them both he wants unquestioned civility at all times. The soldiers agree, and thus ensues a series of scenes that are as tense as they are entertaining. Ivo knows that once the both of them recover, as soon as they leave his house they will fight to the death. Naively, he thinks that he can persuade these enemies to co-exist through his acts of kindness.

It's an effective ploy by Ivo, and Urushadze delivers his naturalistic anti-war message by focusing on the humanity of all the characters. As funny as some of the exchanges are, all the actors play it straight and sincerely. The big surprise is that for a film that covers so much, remarkably it's only 84 minutes long. Ivo exposes the pointlessness of war and fighting for land. The final scene is particularly moving, and Ulfsak is superb as the man who speaks so simply that anyone can understand the futility of war.



# The Stoop. The Heart of Twickenham

Craig Budden

I haven't lived in England for 25 years and when I did I was on an offshore oil rig most of the time. Being a big supporter of England rugby led me to return for a 10 day stay to watch the first two autumn internationals.



Twickenham never lets me down on game day. The lazy breakfast fry-up and the stroll to the pub for pre- game analysis by the multitudes of “experts”.



The walk to the ground amongst the throngs of supporters of both sides. The good natured banter between them and the building excitement as one approaches the ground. Watching the game is exciting but somewhat distant in the vastness that is Twickenham rugby stadium. The following day, however,

I was in for a totally unexpected treat. I went to the Stoop! Now as it turns out, a day at the Stoop starts out similarly with a lazy Sunday breakfast, but after that it's all change because the Stoop and Harlequins appears to me to be all about children and family and great rugby.



After Twickenham it seems like you can almost actually reach out and wrap a congratulatory arm around the players after a thrilling phase of play. Parents, both Mums and Dads, kids, grandparents, young couples, school groups from both sides acting as cheerleaders.

I felt like everyone was there, the whole community, all enjoying being a part of a uniquely Twickenham event supporting their team - The Harlequins. It was absolutely brilliant. Whenever I have the opportunity I will not miss the Stoop, it's the heart of Twickenham.

# Vince Cable appeals to Richmond Council over council tax blow for poorer residents

Twickenham MP Vince Cable has joined Citizens Advice and other local charities in deploring the council's decision to impose a 15% minimum council tax charge on the most vulnerable residents who were hitherto exempted from the charge.

Five years ago the government devolved decisions on council tax support to local authorities. For three years Richmond, together with several neighbouring authorities (Kingston, Hammersmith, Merton, Kensington and Chelsea), did not impose any charge on low income residents in receipt of benefits (other than some disability benefits whose recipients are exempt from the charge). Then last year (2016/17) Richmond introduced a 5% charge. It now proposes to raise it to 15%.

The council's justification is that government support to the council has been cut but there is no evidence to support this, the charities claim. Richmond Citizens Advice has produced a report showing how great hardship is already being caused and it will get much worse.

Vince Cable MP said: "This action by the council is harsh and flies in the face of clear evidence that it will force many families who are just coping at present into serious debt and distress leading in some cases to rent arrears and eviction or the lack of basic essentials."

## TwickerPuzzle Solution 11

**PIN CUSHION?** By Timothy E. Parker

1	D	O	N	N	A	6	T	U	L	I	P	11	M	B	A	
14	A	V	O	I	D	15	O	Z	O	N	E	16	A	L	L	
17	M	A	T	C	H	18	S	T	I	C	K	S	19	T	A	G
20	H	E	Y	21	H	I	E	22	U	S	A					
23	I	M	M	E	R	S	E	26	S	E	T	F	R	E		
29	C	I	A	30	E	T	C	H	31	R	A	R	E			
33	E	S	T	34	D	E	L	A	Y	35	S	O	Y	A	S	
39	U	S	E	40	D	41	M	A	R	E	S	42	M	E	M	E
44	P	Y	R	E	S	45	T	E	S	T	S	47	A	I	D	
49	I	N	C	H	50	M	E	A	T	51	R	N	A			
53	S	M	A	S	H	U	P	55	S	T	E	P	S	O	N	
58	T	E	L	59	E	M	U	60	U	R	L					
61	A	L	I	62	M	A	T	I	N	E	E	I	D	O	L	
68	F	E	Z	69	A	N	O	D	E	70	O	N	E	U	P	
71	F	E	E	72	S	E	N	S	E	73	S	K	A	T	S	

## TWICKENHAM FIXTURES

### TWICKENHAM STADIUM RUGBY FIXTURES 2017-2018

Saturday 2 <sup>nd</sup> September	<b>AVIVA Premiership Rugby</b> London Double Header Saracens v Northampton Saints London Irish v Harlequins	14:00 16:45
Sunday 22 <sup>nd</sup> October	<b>NFL International Series</b> Arizona Cardinals @ LA Rams	18:00
Sunday 29 <sup>th</sup> October	<b>NFL International Series</b> Minnesota Vikings @ Cleveland Browns	13:30
Saturday 4 <sup>th</sup> November	<b>Killik Cup</b> Barbarians v All Blacks	15:00
Saturday 11 <sup>th</sup> November	<b>Old Mutual Wealth Series</b> England v Argentina	15:00
Saturday 18 <sup>th</sup> November	<b>Old Mutual Wealth Series</b> England v Australia	15:00
Saturday 25 <sup>th</sup> November	<b>Old Mutual Wealth Series</b> England v Samoa Old Mutual Wealth Series England Women v Canada Women	15:00 17:40
Thurs 7 <sup>th</sup> December	<b>The Varsity Match</b> Oxford Uni Women v Cambridge Uni Women Oxford University v Cambridge University	11:30 15:00
Saturday 30 <sup>th</sup> December	<b>Big Game 10</b> Harlequins v Northampton Saints	16:00
Saturday 10 <sup>th</sup> Feb 2018	<b>Six Nations</b> England v Wales	16:45
Wednesday 14 <sup>th</sup> March 2018	<b>Schools Cup Finals Day</b> U15 Vase U15 Cup U18 Vase U18 Cup	11:00 12:30 14:00 15:40
Saturday 17 <sup>th</sup> March 2018	<b>Six Nations</b> England v Ireland	14:45
Wednesday 11 <sup>th</sup> April 2018	<b>Students Rugby Day</b>	
Saturday 7 <sup>th</sup> April 2018	<b>The Clash</b> Bath Rugby v Leicester Tigers	tbc
Saturday 5 <sup>th</sup> May 2018	<b>Army v Navy for the Babcock Trophy</b> UK Armed Forces v Oxbridge U23	15:00 12:00

TEAMWORK RESPECT ENJOYMENT DISCIPLINE SPORTSMANSHIP

England Rugby and the RFU Rose are trade marks of the Rugby Football Union

# Letters

Dear Editor,

The following letter was sent to the Council on 16th November on behalf of The Twickenham Society:

“The committee of the Twickenham Society has communicated with its Members at each stage of the public consultation on Twickenham Rediscovered. Society Members were encouraged to view the latest plans, fill in the Council’s October 2017 questionnaire and let the committee know of their response.

Of those who reported back to the committee the vast majority were in favour of the plans, with the remark “There’s been enough talking, now let’s get on with it” being echoed by several people.

The Twickenham Society considers that many of the concerns previously expressed have been resolved. It therefore feels that the current plans are a suitable way forward for the development of this site that has been partially derelict for so long.

Yours sincerely,  
Doug Orchard  
Chairman of The Twickenham Society

---

Dear Twickenham Tribune.

I was so pleased to hear of the successful outcome of the appeal about the yearly Winter Ice Rink. It’s a shame it won’t allow us to have our Ice Rink this Christmas, but it was a good decision in my view and I look forward to having an Ice Rink back in Twickenham again next year.

Sincerely,  
Helen Baker  
East Twickenham

# Have Your Say

## Twickenham Riverside

The Twickenham Riverside Park Team.

We write as concerned residents engaged with the debate about the future of the Twickenham Riverside site over many years. Coming together as the “Twickenham Riverside Park Team”, we stress that the core objectives of a “Town Square”, removal of parking from the river side, a significant community hub and public access space are essential if we are to have the promised “New Heart for Twickenham”.

We have engaged fully with this matter, campaigning for a better process and outcome. We welcomed the Council’s pledge to be a “Listening Council”, reflected in the Barefoot Consultation which informed the Twickenham Area Action Plan. This recognised the importance of the whole site and its relationship to the wider context for the future regeneration of Twickenham.

We believe that the current proposal falls short of the initial brief for the site and the objectives of the TAAP in most respects and fails to deliver on initial promises.

For instance, the documents accompanying the initial proposal by The Terry Partnership selected in 2015 said, “Residents have told us that they want to remove cars from the riverside. Therefore the biggest change to parking is that it will be removed from the embankment directly in front of Diamond Jubilee Gardens”, and further, “Parking is to be relocated from the river frontage and re-provided through underground parking under the new development...”

Now we are told that riverside parking will be retained and that, bizarrely, the whole Embankment area is removed from the planning application as not part of the site. Parking and traffic plans will be addressed separately. Despite the consultation of July 2016 advising parking and traffic surveys would be completed by last December, none have been made available even after FOI requests. Limited underground parking is mostly allocated to 37 private flats in the scheme, contrary to guidance for developments in urban areas well served by public transport.

The process followed has created a significant and widening disconnect between the Council and local people about the development of the Riverside. The consultation exercises, petitions, social media comments and our own soundings confirm that the current proposal is not favoured and would not meet the ambitions local people have for the Riverside and wider Twickenham. A once in a lifetime opportunity to suitably develop this site of great heritage significance is at risk of being lost for ever.

That positive direction of travel has been lost. The Council seems to have got locked into a corner, literally in respect of the restricted portion of the whole site it is intent on developing. Combining this with a financial “model” seeking near full and early recovery of the capital outlay on the land and build costs directly from the development of the site inevitably results in proposals that are too massive and unsuitable for the immediate surrounding environment, including a conservation area.

Rather than facilitating an ambitious vision for the site, the Council seems to have become more

preoccupied with what can't be done rather than with what it could enable, which is its appropriate role.

The Council, by pushing these proposals forward against local opinion, is heading up a blind alley and alienating local opinion. While the problem of the site has been unresolved for too long that doesn't justify a headlong rush towards the wrong solution. Time and resources spent so far on this exercise are not necessarily wasted. However, committing the much larger sums of council tax payer's money set aside to take this through to a planning application places these funds at risk. To go on along this path may only result in further delay.

We strongly suggest that before proceeding you urgently review the comments made by over 900 constituents who responded to the Council's latest consultation round ending on October 30th, particularly all the responses made in free text. We believe that you will find these mostly critical of the current proposals. Surprisingly this response rate was over double that of the last round when it might have been expected that "consultation fatigue" would be setting in.

We also urge you to receive our on-line petition, signed by nearly 2000 residents, and review over 250 comments they have written. To reject the medium that was used would also be to reject the message, which would be a mistake.

So, we appeal for a moratorium. Faced with this degree of resistance we suggest that the Council would be wise to take the sensible decision to pause and listen.

In the meantime we are preparing a dossier examining the shortcomings of the proposal and process by which it has been arrived at, which are clearly linked, suggesting an alternative and positive way ahead for your consideration.

Yours,

The Twickenham Riverside Park Team.

*Below, excerpts from the council's initial 'Town Square' Consultation*

***"Make the riverside pedestrianised and take traffic away from the riverside."***

Parking Strategy – Residents have told us in the many local consultations that they want to remove cars from the Riverside. Therefore, the biggest proposed change to parking is that parking will be removed from the Embankment directly in front of Diamond Jubilee Gardens. This is to enhance the views of the river from DJG and also provide better access from the Embankment up to DJG. Street level parking will

## What you told us

### In the Barefoot Consultation (2010) (approx. 2,000 people took part and 400 people attended the conference)

Over 49% of people who took part said they wanted a market place / town square for Twickenham. Residents said they would like access to the riverside to be opened up from the surrounding streets.

There was general support for pedestrianisation of the riverside. Many also suggested moving the farmers market to the riverside.

***“Improve access to the riverside from town centre.”***

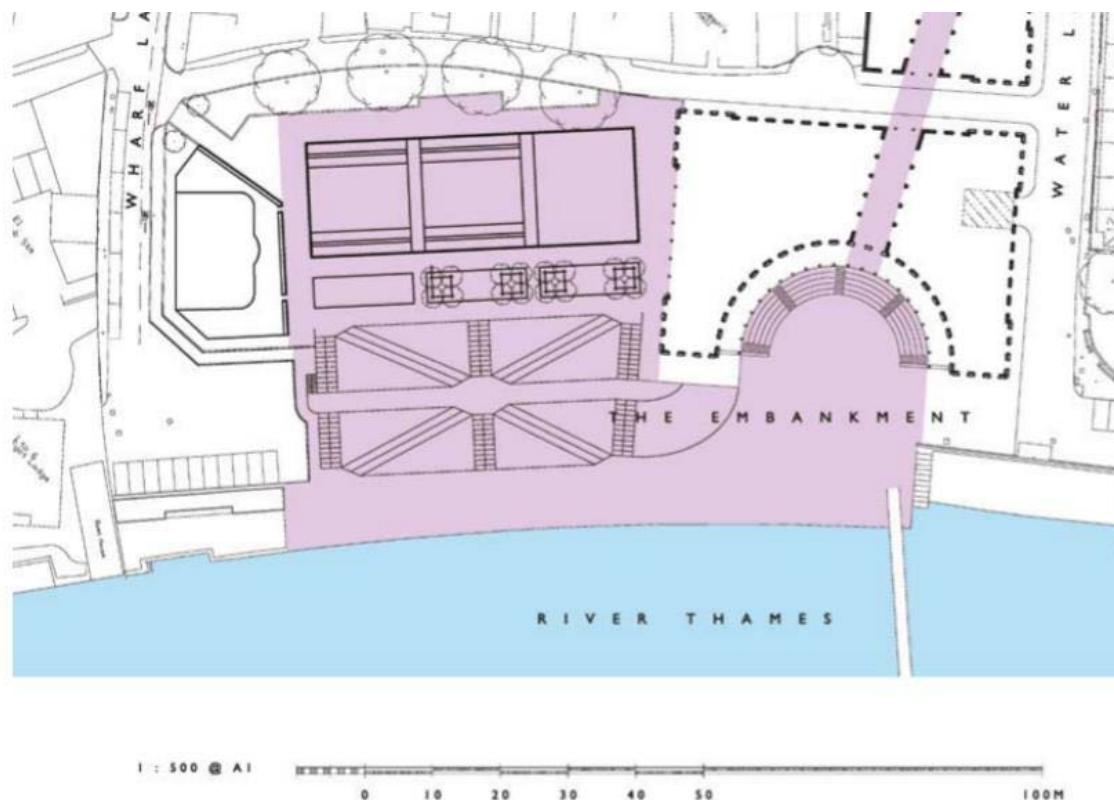
***“Make the riverside pedestrianised and take traffic away from the riverside.”***

### Will the scheme impact the existing on-street parking on The Embankment and Water Lane?

Parking is to be re-located from the river frontage and re-provided through underground parking under the new development and street level car parking at the end of Wharf Lane. This will obviously result in less traffic movement within the area as the intention is for priority parking for residents, businesses of Eel Pie Island, the Embankment and Water Lane.

### How much parking will be left on the Riverside?

As well as connecting the Town Centre with the river, the scheme as proposed seeks to maximise the connection between Diamond Jubilee Gardens and the Thames. It achieves this by removing a significant stretch of embankment side roadway and parking and by replacing it with further areas of public open space. This proposal presents approximately 90 parking spaces available in the future. Approximately 50 would be available for residents / public parking, whilst around 40 spaces would be created in the basement of the proposed building for the residential and commercial units that are created by the scheme. Other parking would be re-provided in spaces elsewhere in the general area.



**This diagram demonstrates the overall community / public space.**

**TWICKENHAM**  
**REDISCOVERED**

Half Page

Quarter Page Landscape

Quarter Page Portrait

Eighth Page Landscape

Eighth Page

Example advert sizes shown above

Thousands read The Twickenham Tribune

If you are reading this you could be advertising your business with  
The Twickenham Tribune. Community rates are available

Contact: [advertise@twickenhamtribune.com](mailto:advertise@twickenhamtribune.com)

View ad details at [www.twickenhamtribune.com/advertise](http://www.twickenhamtribune.com/advertise)

©Twickenham Alive Limited. All rights reserved. No part of this publication may be used or reproduced without the permission of Twickenham Alive Limited. While we take reasonable efforts, this online newspaper cannot be held responsible for the accuracy or reliability of information. The views and opinions in these pages do not necessarily represent those of Twickenham Alive Limited or The Twickenham Tribune. [Terms & Conditions](#)